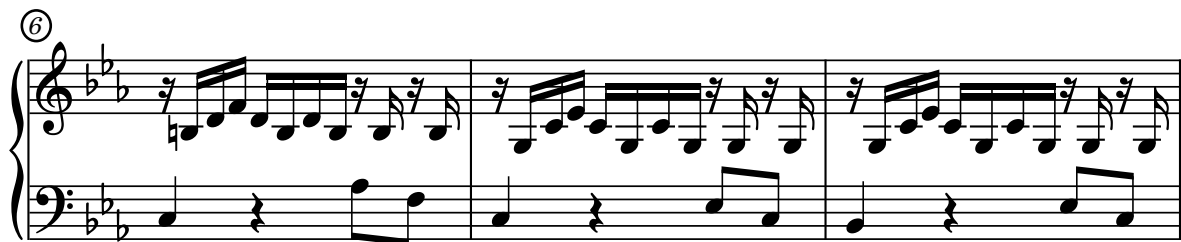


Preludio in Cm

Bwv 999

J.S.Bach



(13)

Measures 13-15 of a musical score in 3/4 time, key of B-flat major. The right hand features a complex rhythmic pattern with eighth and sixteenth notes, while the left hand provides a simple bass line with quarter notes and rests.

(16)

Measures 16-18 of a musical score in 3/4 time, key of B-flat major. The right hand continues with a complex rhythmic pattern, and the left hand maintains a simple bass line.

(18)

Measures 19-21 of a musical score in 3/4 time, key of B-flat major. The right hand continues with a complex rhythmic pattern, and the left hand maintains a simple bass line.

(21)

Measures 22-24 of a musical score in 3/4 time, key of B-flat major. The right hand continues with a complex rhythmic pattern, and the left hand maintains a simple bass line.

(24)

Measures 25-27 of a musical score in 3/4 time, key of B-flat major. The right hand continues with a complex rhythmic pattern, and the left hand maintains a simple bass line.

(27)

Measures 28-30 of a musical score in 3/4 time, key of B-flat major. The right hand continues with a complex rhythmic pattern, and the left hand maintains a simple bass line.

(29)

Measures 29 and 30 of a piano piece in B-flat major. The right hand features a complex melodic line with many beamed sixteenth notes and slurs. The left hand provides a simple accompaniment with quarter notes and rests.

(31)

Measures 31 and 32. The right hand continues with intricate sixteenth-note patterns. The left hand has a few quarter notes and rests.

(33)

Measures 33 and 34. Similar to the previous system, with a busy right hand and a simpler left hand.

(35)

Measures 35, 36, and 37. The right hand's melodic line becomes even more complex with more beaming. The left hand has a few quarter notes and rests.

(38)

Measures 38, 39, and 40. The right hand continues with sixteenth-note patterns. The left hand has a few quarter notes and rests.

(41)

Measures 41, 42, and 43. The right hand continues with sixteenth-note patterns. The left hand has a few quarter notes and rests. The piece ends with a double bar line and repeat dots.